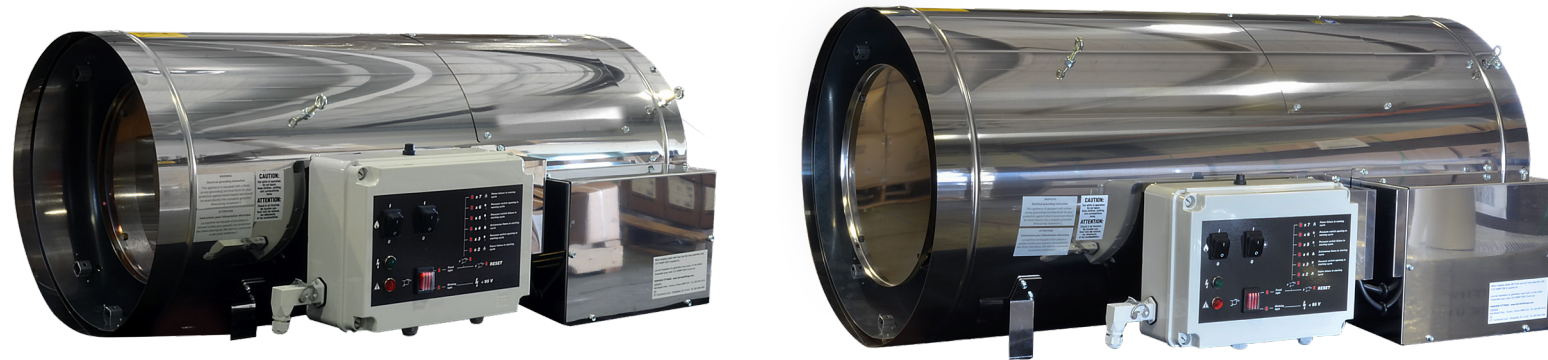


SILVER BULLET - HEATERS & CO2 GENERATORS



FEATURES:

- Stainless Steel Burner and Shell
- 99%+ Fuel Efficient
- On-board diagnostics
- Arrives set for NG, LP kit included

	HS250 AG	HS400 AG	HS408 AG
Thermal capacity	250,000 BTU	400,000 BTU	400,000 BTU
Airflow	2,766 cfm	4,120 cfm	4,120 cfm
Temperature rise	540°F @68°ambient	620°F @68°ambient	620°F @68°ambient
Power	110V - 5.0A	110V - 9.5A	208-230V - 5.0A
Weight	100 lbs.	120 lbs.	120 lbs.

GAS	HS250AG	HS250AG	HS400AG/HS408AG	HS400AG/HS408AG
	Natural Gas	Propane	Natural Gas	Propane
CO2	9.30%	9.41%	8.62%	9.68%
CO	5 ppm	6 ppm	6 ppm	5 ppm
Ethylene	<5 ppm	<5 ppm	<5 ppm	<5 ppm

GREENHOUSE HEATERS



GREENHOUSE VENT FREE RADIANT & BLUE FLAME HEATERS

- Available in 30,000 / 20,000 / 10,000 BTU sizes
- Blower fan included on all 20,000 & 30,000 BTU units
- Automatic low oxygen shut-off system (ODS)
- No venting or chimney required
- 4500 ft high altitude restriction (see manual for use above 4,500 feet)
- CSA certified - Not Approved for use in California or Canada.

This heater obtained the indicated BTU ratings when tested per ANSI Z21.11.2-2002, addenda Z21.11.2a-2003 "Gas Fired Room Heaters", Volume II, "Unvented Room Heaters."



UNIT HEATERS WITH ALUMINIZED HEAT EXCHANGERS

UNIT HEATERS WITH STAINLESS STEEL HEAT EXCHANGERS



80,000 BTU utility heater shown



200,000 BTU unit heater shown

FEATURES

- Powder coated cabinet
- 82% thermal efficiency
- Air louvers with 3 locking positions
- All models ship equipped for natural gas (LP conversion kit sold separately)
- Easily installs using 3/8"-16 threaded rods (sold separately)
- Spark ignition features self-diagnostic control mode
- Certified

LIMITED WARRANTY

- 3 year warranty on parts (limited to 1 year in high humidity or caustic environments)
- 10 years on aluminized heat exchanger (5 years when installed in corrosive environments)

POWER VENTED UNIT HEATER SPECIFICATIONS

Stock Number	Model Number	Input (BTU/HR)	Heating Area	Flue Size	V / A / H Phase	Motor HP	Motor RPM	Shipping Weight	Unit Dimensions W x H x D	LP Conversion Kit (sold separately)
ALUMINIZED STEEL HEAT EXCHANGER *(125,000 BTU model is available by special order only)										
F163066	HSU400NGPALP	400,000	13,400 sq. ft.	6"	115 / 12 / 1	3/4	1,125	341 lbs.	40.5" x 40.0" x 36.3	F163073
F163065	HSU300NGPALP	300,000	10,000 sq. ft.	6"	115 / 10 / 1	1/2	1,130	264 lbs.	40.5" x 31.8" x 35.8"	F163073
F163064	HSU250NGPALP	250,000	8,400 sq. ft.	6"	115 / 7 / 1	1/3	1,140	244 lbs.	40.5" x 29.0" x 35.0"	F163072
F163063	HSU200NGPALP	200,000	6,700 sq. ft.	4"	115 / 7 / 1	1/3	1,140	212 lbs.	40.5" x 26.3" x 35.0"	F163071
F163062	HSU150NGPALP	150,000	5,000 sq. ft.	4"	115 / 5 / 1	1/6	1,050	170 lbs.	33.5" x 23.5" x 33.0"	F163070
F163061*	HSU125NGPALP	125,000	3,125 sq. ft.	4"	115 / 7 / 1	1/8	1,440	152 lbs.	36.0" x 20.7" x 32.0"	F163070

SMALL POWER VENTED UTILITY HEATER SPECIFICATIONS

Stock Number	Model Number	Input (BTU/HR)	Heating Area	Flue Size	V / A / H Phase	Motor HP	Motor RPM	Shipping Weight	Unit Dimensions W x H x D	LP Conversion Kit (sold separately)
ALUMINIZED STEEL HEAT EXCHANGER										
F160491	HSU125NG	125,000	3,125 sq. ft.	4"	120 / 3 / 1	1/3	1,050	120 lbs.	25.0" x 24.6" x 26.5"	F260163
F160561	HSU80NG	80,000	2,000 sq. ft.	4"	120 / 2.3 / 1	1/10	1,050	88 lbs.	25.0" x 17.0" x 25.0"	F260163
F160551	HSU50NG	50,000	1,250 sq. ft.	4"	120 / 2.3 / 1	1/20	1,650	66 lbs.	25.0" x 12.0" x 24.0"	F260163

GREENHOUSE UNIT HEATER ACCESSORIES

Stock Number	Description
F200029	Optional vent kit for vertical venting, 4 inch diameter
F102864	Optional vent kit for vertical venting, 6 inch diameter
F200030	Optional vent kit for horizontal venting/stainless steel, 4 inch diameter
F102863	Optional vent kit for horizontal venting/stainless steel, 6 inch diameter
F260164	Fuel conversion kit - converts utility heater from propane to natural gas
F260163	Fuel conversion kit - converts utility heater from natural gas to propane
F200042	24-volt thermostat



Please note: all unit dimensions and weights are subject to change

855.579.9757



150,000 BTU unit heater shown



250,000 BTU unit heater shown



400,000 BTU unit heater show

FEATURES

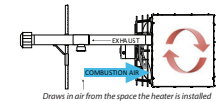
- Power vented or separated combustion units
- Powder coated cabinet
- 82% thermal efficiency
- Air louvers with 3 locking positions
- All models ship equipped for natural gas (LP conversion kit sold separately)
- Easily installs using 3/8"-16 threaded rods (sold separately)
- Spark ignition features self-diagnostic control mode
- Certified

LIMITED WARRANTY

- 3 year warranty on parts (limited to 1 year in high humidity or caustic environments)
- 10 years on stainless steel heat exchanger

HEATSTAR® POWER VENTED UNIT HEATERS

Designed to use fresh air for combustion instead of indoor air. These heaters can also operate with a vent pipe only, in standard combustion mode, by pulling in fresh air directly from the room.

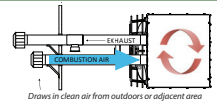


POWER VENTED UNIT HEATER SPECIFICATIONS

Stock Number	Model Number	Input (BTU/HR)	Heating Area	Flue Size	V / A / H Phase	Motor HP	Motor RPM	Shipping Weight	Unit Dimensions W x H x D	LP Conversion Kit (sold separately)
STAINLESS STEEL HEAT EXCHANGER *(100,000 and 150,000 BTU models are available by special order only)										
F163056	HSU400NGPSSP	400,000	13,400 sq. ft.	6"	115 / 12 / 1	3/4	1,125	341 lbs.	40.5" x 40.0" x 36.3	F163073
F163055	HSU300NGPSSP	300,000	10,000 sq. ft.	6"	115 / 10 / 1	1/2	1,130	264 lbs.	40.5" x 31.8" x 35.8"	F163073
F163054	HSU250NGPSSP	250,000	8,400 sq. ft.	6"	115 / 7 / 1	1/3	1,140	244 lbs.	40.5" x 29.0" x 35.0"	F163072
F163053	HSU200NGPSSP	200,000	6,700 sq. ft.	4"	115 / 7 / 1	1/3	1,140	212 lbs.	40.5" x 26.3" x 35.0"	F163071
F163052*	HSU150NGPSSP	150,000	5,000 sq. ft.	4"	115 / 5 / 1	1/6	1,050	166 lbs.	33.5" x 23.5" x 33.0"	F163070
F163051	HSU125NGPSSP	125,000	4,167 sq. ft.	4"	115 / 5 / 1	1/8	1,440	152 lbs.	36.0" x 20.7" x 32.0"	F163070
F163050*	HSU100NGPSSP	100,000	3,333 sq. ft.	4"	115 / 5 / 1	1/8	1,440	152 lbs.	36.0" x 20.7" x 32.0"	F163070

HEATSTAR® SEPARATED COMBUSTION UNIT HEATERS

The fan pulls fresh air into the combustion chamber from the room air. The power vent system quickly and efficiently exhausts flue gases from the unit heater to the outdoors through a single vent pipe, minimizing installation labor.



SEPARATED COMBUSTION UNIT HEATER SPECIFICATIONS

Stock Number	Model Number	Input (BTU/HR)	Heating Area	Flue Size	V / A / H Phase	Motor HP	Motor RPM	Shipping Weight	Unit Dimensions W x H x D	LP Conversion Kit (sold separately)
STAINLESS STEEL HEAT EXCHANGER *(100,000, 125,000 and 150,000 BTU models are available by special order only)										
F163036	HSU400NGPSS	400,000	13,400 sq. ft.	6"	115 / 12 / 1	3/4	1,125	341 lbs.	40.5" x 40.0" x 36.3	F163073
F163035	HSU300NGPSS	300,000	10,000 sq. ft.	6"	115 / 10 / 1	1/2	1,130	264 lbs.	40.5" x 31.8" x 35.8"	F163073
F163034	HSU250NGPSS	250,000	8,400 sq. ft.	6"	115 / 7 / 1	1/3	1,140	244 lbs.	40.5" x 29.0" x 35.0"	F163072
F163033	HSU200NGPSS	200,000	6,700 sq. ft.	4"	115 / 7 / 1	1/3	1,140	212 lbs.	40.5" x 26.3" x 35.0"	F163071
F163032*	HSU150NGPSS	150,000	5,000 sq. ft.	4"	115 / 5 / 1	1/6	1,050	166 lbs.	33.5" x 23.5" x 33.0"	F163070
F163031*	HSU125NGPSS	125,000	4,167 sq. ft.	4"	115 / 5 / 1	1/8	1,440	152 lbs.	36.0" x 20.7" x 32.0"	F163070
F163030*	HSU100NGPSS	100,000	3,333 sq. ft.	4"	115 / 5 / 1	1/8	1,440	152 lbs.	36.0" x 20.7" x 32.0"	F163070

Please note: all unit dimensions and weights are subject to change

WWW.HEATSTARAG.COM