

V-FLECTOR™ BROOD HEATER

HEATSTAR AG.

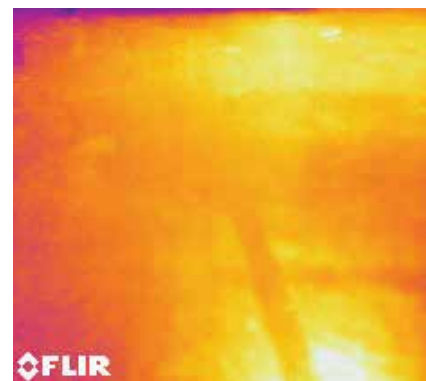



FEATURES

- Durable Stainless Steel Construction
- V-Flector™ Technology
- Enhanced Heat Pattern
- Dual Layer Cleanable Filter
- Reinforced Gas Supply
- Hanging Bracket Included
- Easy Maintenance & Cleaning
- Stack-to-Store Design
- 17,000 or 10,000 BTUs
- 1-Year Limited Warranty

ENHANCED HEAT PERFORMANCE

The Heatstar AG® reflector with built-in V-Flector™ technology efficiently reflects the infrared (IR) energy providing an enhanced heat pattern and comfortable space for swine.



V-FLECTOR™ BROOD HEATER



V-Flector™ Technology

The V-Flector design utilizes the maximum amount of radiant heat from the burner. The added efficiency allows your facility to reach the desired temperature quickly. The reflector design throws direct heat precisely where needed.



Dual Layer Filter System

The highly durable dual layer system has a hard exterior filter and a fine mesh filter both made of stainless steel. The exterior filter is heavy-duty, while being easy to clean and maintain. The inner mesh filter keeps out harmful particles.

Model Number	F170018AG	F170010AG
BTU/HR Rating (maximum input)	17,000	10,000
Coverage Area (sq. ft.)	200-300	150-200
Pig Coverage	100	100
Install Height (ft. from ground)	4 - 5	4 - 5
Filter	Included - 316SS Mesh	Included - 316SS Mesh
Operating Pressure LP/NG (PSI)	5	5
Fuel Consumption LP/NG	.79 lbs/hr. / 17 cu. ft./hr.	.46 lbs/hr. / 10 cu. ft./hr.
Ignition Type	Manual	Manual
Dimensions (in.)	19L x 8.5Wx 8H	19L x 8.5Wx 8H
Weight (lbs.)	4	4
Clearance to Combustibles (ft.)	Top - 3 Sides - 3 Under - 3.5	Top - 3 Sides - 3 Under - 3.5

Gas Accessories	
70010	Quick Connect Kit - Kit includes: 1/2" x 3/8" male NPT nipple, a 3/8" female NPT shut off valve, a 3/8" nipple, 3/8" QC socket, 3/8" QC plug, and an adapter 1/4" male flare x 1/8" female NPT.
77322	1/4" Male Quick Connect Adapter
Hoses - 74708-72 (6'), 74708-96 (8'), 74708-120 (10')	1/4" ID thermoplastic hose, one end 3/8" male NPT thread, the other end 1/4" female flare SAE thread with an adapter to convert the flare to 1/8" female NPT thread (attaches to swine brood heater)
807209	L-R Conversion Adapter to an M8/M5 Gasolec Brood Heater

Heater Accessories	
02482	Mounting bracket for 10,000 BTU unit
02483	Mounting bracket for 17,000 BTU unit