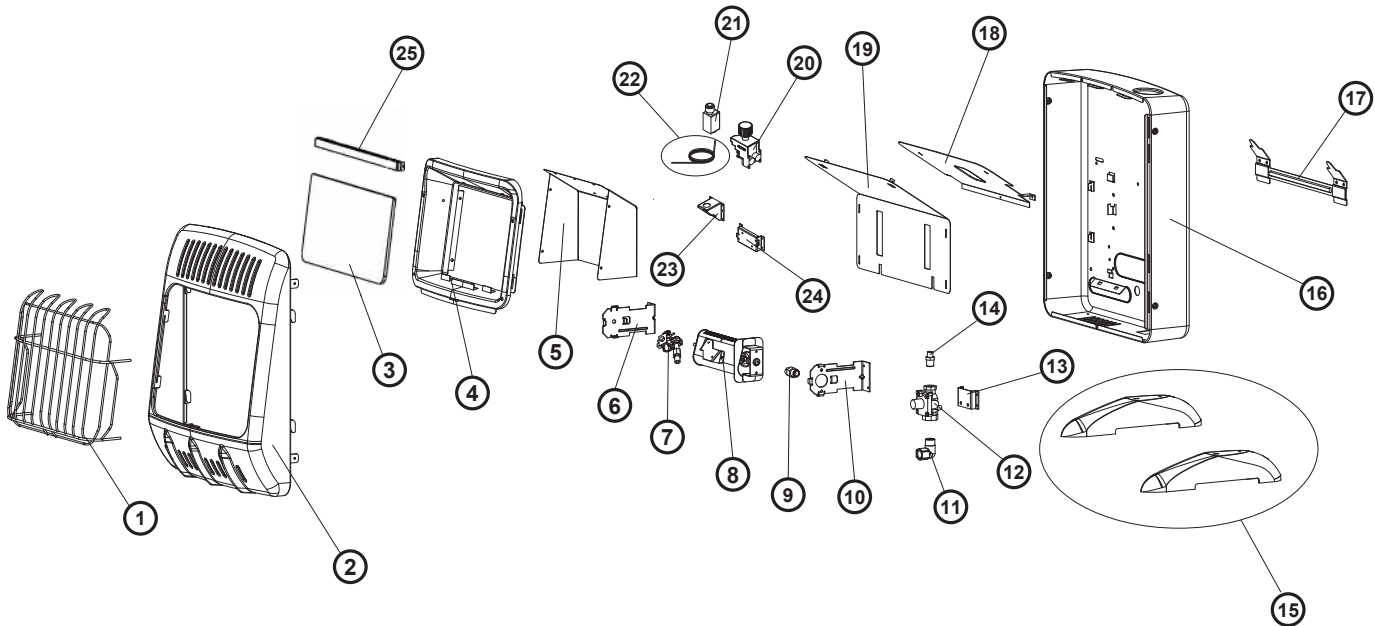


# PARTS LIST AND DIAGRAM

MODEL: HSSVFBF10LPT							
ITEM	P/N	PART DESCRIPTION	QTY	ITEM	P/N	PART DESCRIPTION	QTY
1	80040	Wire Guard	1	15	80058	Floor Mounting Feet	1
2	80051	Front Panel	1	16	80052	Back Panel	1
3	80038	Glass	1	17	80036	Wall Mounting Bracket	1
4	80024	Reflector	1	18	N/A	Heat Shield	1
5	80026	Reflector Back Panel	1	19	N/A	Back Heat Shield	1
6	N/A	Burner Left Bracket	1	20	70640	Thermostat Valve	1
7	80056	ODS Pilot Assembly w/ Thermocouple (LP)	1	21	80019	Ignitor Pulse	1
8	80017	Burner Assembly	1	22	80014	Ignitor Wire	1
9	80009	Orifice	1	23	80011	Ignitor Bracket	1
10	N/A	Burner Right Bracket	1	24	80010	Thermostat Valve Mounting Bracket	1
11	70597	3/8" FTP x 3/8" MPT Elbow	1	25	80034	Glass Bracket	1
12	80078	Regulator	1	26	70569	Hose Assembly w/ Regulator	1
13	N/A	Regulator Mounting Bracket	1	**	70342	Hardware Kit (not shown)	1
14	N/A	Regulator Connection	1				



**WARNING:** Failure to position the parts in accordance with these diagrams or failure to use only parts specifically approved with this heater may result in property damage or personal injury.



# PARTS LIST AND DIAGRAM

MODEL: HSSVFRD10LPT							
ITEM	P/N	PART DESCRIPTION	QTY	ITEM	P/N	PART DESCRIPTION	QTY
1	80040	Wire Guard	1	11	N/A	Regulator Connection	1
2	80051	Front Panel	1	12	80058	Floor Mounting Feet	1
3	80024	Reflector	1	13	80052	Back Panel	1
4	80030	Burner Assembly	1	14	80036	Wall Mounting Bracket	1
5	80056	ODS Pilot Assembly w/ Thermocouple (LP)	1	15	N/A	Heat Shield	1
6	80032	ODS Bottom Bracket	1	16	N/A	Back Heat Shield	1
7	N/A	Fireproof Plate	1	17	70640	Thermostat Valve	1
8	70597	3/8" FTP x 3/8" MPT Elbow	1	18	80019	Ignitor Pulse	1
9	80078	Regulator	1	19	80014	Ignitor Wire	1
10	N/A	Regulator Mounting Bracket	1	**	70342	Hardware Kit(not shown)	1

**WARNING:** Failure to position the parts in accordance with these diagrams or failure to use only parts specifically approved with this heater may result in property damage or personal injury.

